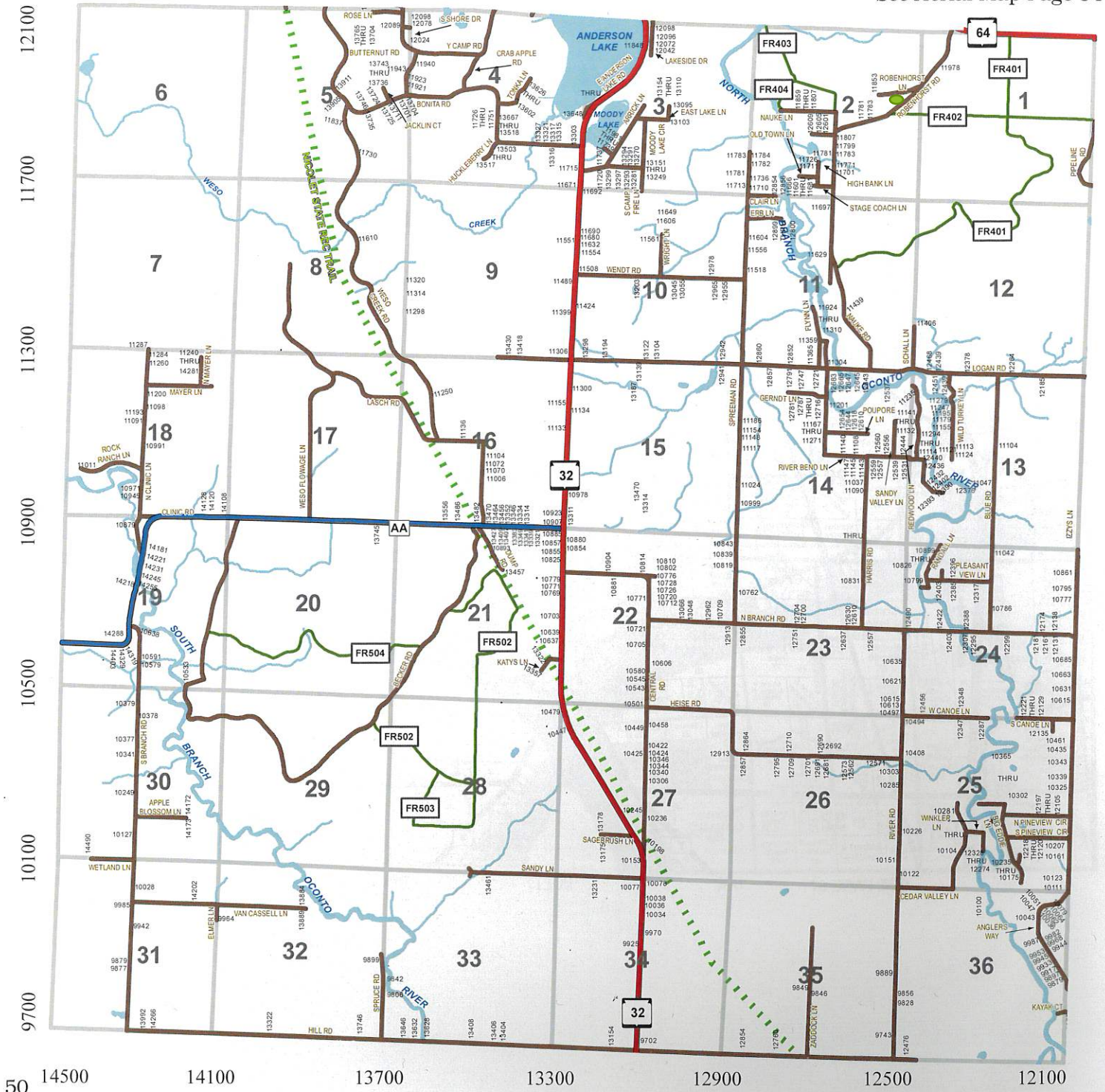




Breed

Township 30N - Range 17E

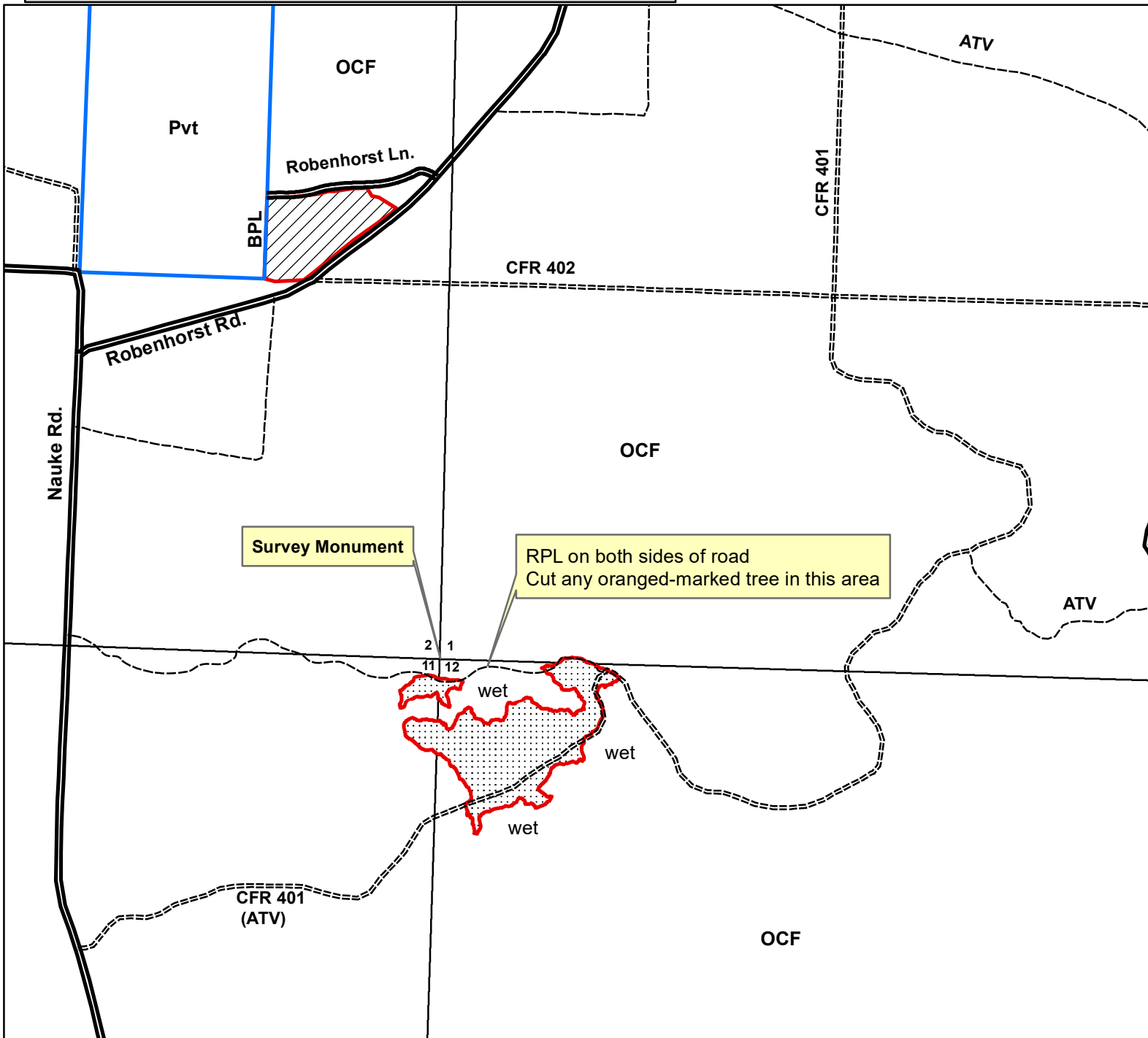
Copyright © 2018 Mapping Solutions
See Aerial Map Page 94



- Coppice harvest (18 ac)- Cut all trees 2" DBH & bigger
DO NOT CUT- all green-marked trees, standing dead trees,
& ALL white oak, spruce, & white pine under 5"
- Pine thinning (8 ac) - harvest/cut all orange-marked trees
AND all storm-damaged trees.

- HRD treatment required in pine thinning unit from April 1-Nov30
- Cut pine CANNOT be stored on-site for more than 14 days from May 1-August 31
- CFR 401 is a designated ATV trail- warning signage required
- Do not leave slash/logging debris in forested wetlands OR in T. of Breed R.O.W.; do not drop trees across blue line
- Red Maple unit: Stems on unmerchantable trees must be cut/severed
- Coppice unit requires frozen or very dry (as determined by OCF) ground conditions for equipment use

Red Maple	25 MBF (sawtimber)
Oak sawtimber	13 MBF (sawtimber)
White Pine	420 Ton (All products)
Red Pine	230 Ton (All products)
Mixed Conifers	10 Ton (All products)
Aspen	140 Ton (All products)
Mixed Hardwoods	265 Ton (bolts/pulp)



PT OF NWNW, Sec.12, NENE, Sec. 11, SENE, Sec. 2
T30N, R17E, T. of Breed

1:11,880 (6 in = 1 mile)



Firgens